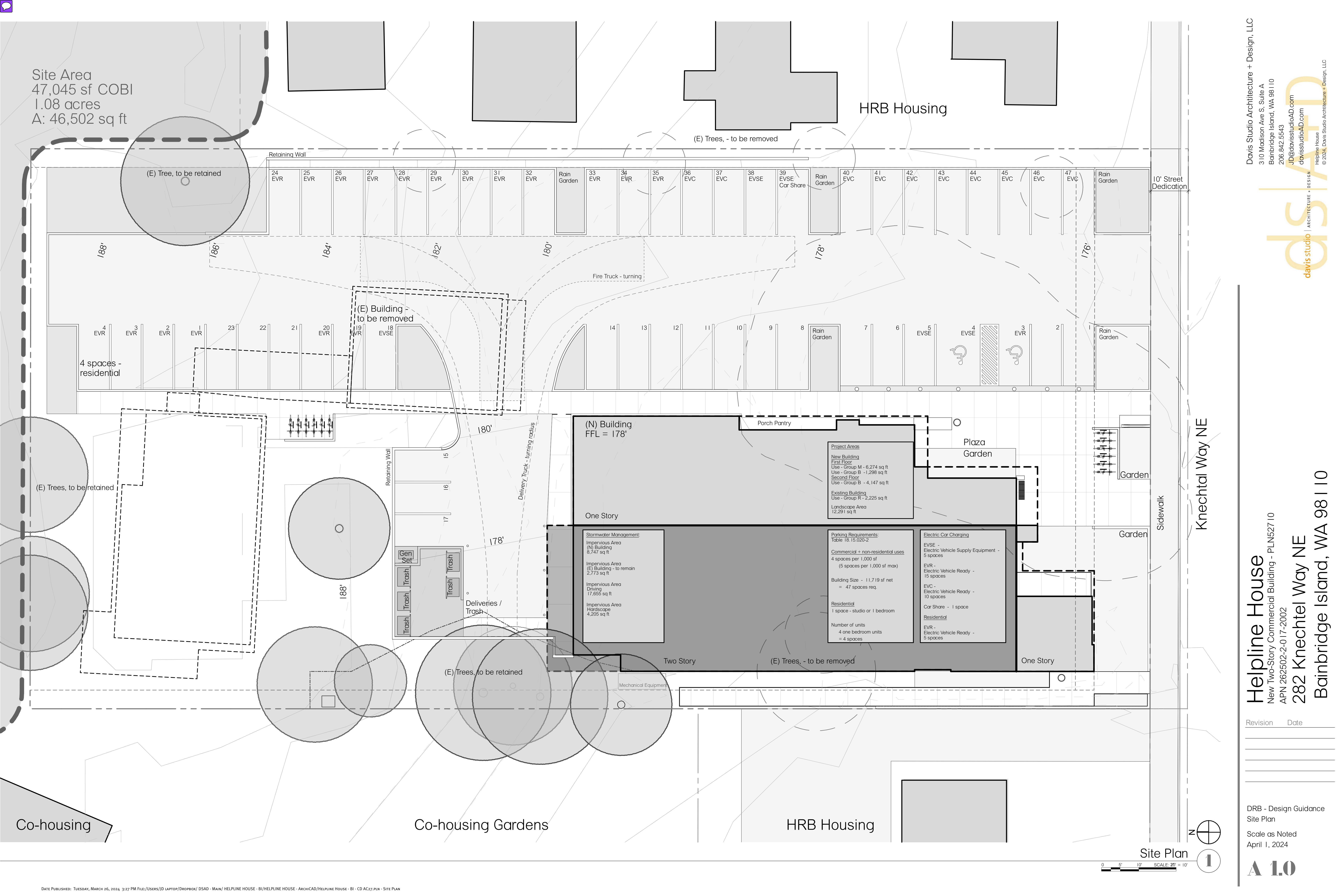




Helpline House

Helpline
House

Site Area
47,045 sf COBI
1.08 acres
A: 46,502 sq ft



(N) Building
FFL = 178'

One Story

Stormwater Management:
 Impervious Area (N) Building
8,747 sq ft
 Impervious Area (E) Building - to remain
2,773 sq ft
 Impervious Area Driveway
17,656 sq ft
 Impervious Area Hardscape
4,205 sq ft

Project Areas
New Building
 First Floor
 Use - Group M - 6,274 sq ft
 Use - Group B - 1,298 sq ft
 Second Floor
 Use - Group B - 4,147 sq ft
Existing Building
 Use - Group R - 2,225 sq ft
 Landscape Area
 12,291 sq ft

Parking Requirements:
 Table 18.15.020-2
Commercial + non-residential uses
 4 spaces per 1,000 sf
 (5 spaces per 1,000 sf max)
 Building Size - 11,719 sf net
 = 47 spaces req.
Residential
 1 space - studio or 1 bedroom
 Number of units
 4 one bedroom units
 = 4 spaces

Electric Car Charging
 EVSE - Electric Vehicle Supply Equipment - 5 spaces
 EVR - Electric Vehicle Ready - 15 spaces
 EVC - Electric Vehicle Ready - 10 spaces
 Car Share - 1 space
Residential
 EVR - Electric Vehicle Ready - 5 spaces

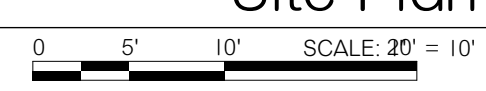
Two Story

One Story

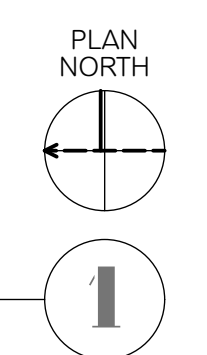
Revision	Date

DRB - Design Guidance
 Site Plan
 Scale as Noted
 April 1, 2024

Site Plan
 1

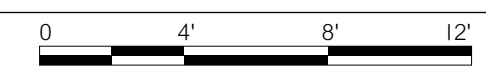


g / Unloading



First Floor Plan

1

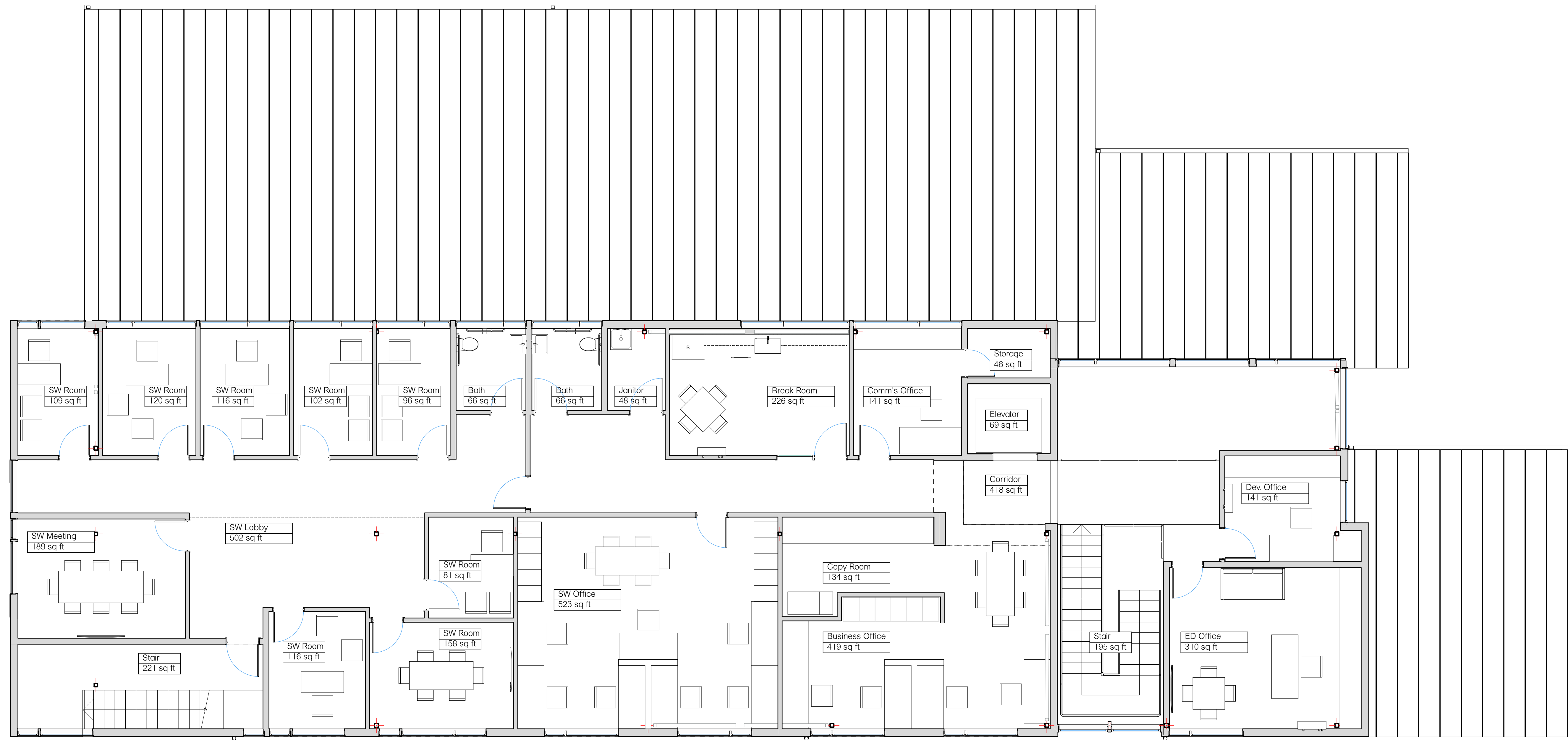


Helpline House
 New Two-Story Commercial Building - PLN52710
 APN 262502-2-017-2002
282 Knechtel Way NE
Bainbridge Island, WA 98110

Revision	Date

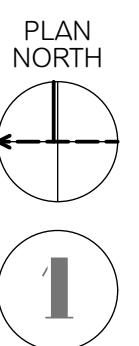
DRB - Design Guidance
 First Floor Plan
 Scale as Noted
 April 1, 2024





Revision	Date

DRB - Design Guidance
 Second Floor Plan
 Scale as Noted
 April 1, 2024



Second Floor Plan

